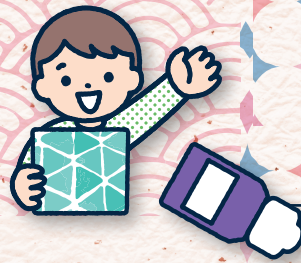


|| Fold, dye, and unfold Washi Paper -
enjoy the moment of surprise! ||



Washi Paper Fold-and-Dye Workshop

Reservation
required

2026
Saturday, February 7th

Free of
charge!



Hours 10:00 AM-12:00 PM, 1:00 PM-4:00 PM
《Experience time: about 45 minutes per session》

Sessions 5 sessions total
《①10:00/②11:00/③13:00/④14:00/⑤15:00》

Location Tokyo Chuo City Tourist Information Center, 1F

Capacity 12 participants per session,
maximum 60 participants total

Registration Advance reservation required for each session.
If space is available, same-day walk-in
registration will be accepted.

Age range 5 years and up
*Children under junior high school age must
be accompanied by an adult.

Reservation First-come, first-served.
Reservations are accepted by phone or in
person at the reception desk.



*Reservations will be accepted from Friday, January 23rd. *Please let us know your preferred time and the number of people attending. *Registration will close when each session reaches capacity. *Please gather 10 minutes before the start time. Please note that your reservation will be canceled if you fail to arrive on time. *Young children must be accompanied by an adult. *Image is for illustration purposes.

Please check the website for more detail.
<https://centraltokyo-tourism.com>



Inquiries
and
reservations

Tokyo Chuo City Tourist Information Center
B1F・1F Kyobashi Edogrand, 2-2-1, Kyobashi, Chuo-ku, Tokyo
☎03-6262-6481

Access ·Directly connected from exit 8, Kyobashi Station on the Tokyo Metro Ginza Line
·5min walk from Yaesu south exit, JR Tokyo Station
·3min walk from exit A6/A7, Takaracho Station on the Toei Asakusa Line

